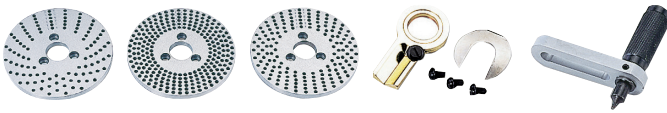


A. DIVIDING PLATES

DP-2, 3, 4, 5



DP-1



*DP set include index plate, crank handle, 3 pcs screw, sector, & U Washer.

1 carton with 1 set. Gross weight: 3.5kgs.

Meas.: 0.13 CFT.

Number of the holes of Dividing Plates

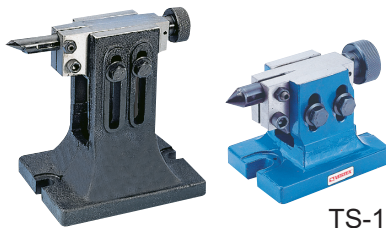
ORDER NO.	SUIT FOR MODEL	WEIGHT kg	CODE NO.
*DP-1	for HV-4, HV-6, VUT-6, VU-100, 150	1.4	1001-030

ORDER NO.	SUIT FOR MODEL	WEIGHT kg	CODE NO.
* DP-2	for HV -8, VU-200	4.5	1001-031
DP-3	for HV -10, 12, 14, 16, VUT-10, RT -12	4.6	1001-032
DP-4	for CS-6, 8	4.6	1001-033
DP-5	for VU-300	4.6	1001-034

A-Plate	15, 16, 17, 18, 19, 20
B-Plate	21, 23, 27, 29, 31, 33
C-Plate	37, 39, 41, 43, 47, 49

A-Plate	26, 30, 34, 38, 41, 44, 47, 51, 57 28, 32, 37, 39, 43, 46, 49, 53, 59
B-Plate	61, 67, 71, 77, 81, 87, 91, 97 63, 69, 73, 79, 83, 89, 93, 99

B. TAILSTOCK



TS-1

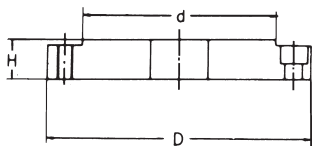
ORDER NO.	adjustable		SUIT FOR MODEL	G.W. kg	Meas. CFT	CODE NO.
	highest	lowest				
TS-1	108	80	HV-4, HV-6, VSI-4, VSI-5, BS-0, VUT-6, VU-100, VU-150	3.9	0.4	1001-022
TS-2	145	115	BS-1, CC-6 CS-6, HV-8	5.5	0.4	1001-023
TS-3	200	130	CS-8, HV-10, HV-12, CC-8, VUT-10, VUT-12, VU-200	8.1	0.4	1001-024
TS-4	260	190	HV-14 HV-16	11.9	0.7	1001-025

Unit:mm

C. FLANGE



FLT-0 For VSC-5F
FLT-1 For VSC-6F
FLT-2 For VSC-7F
FLT-3 For VSC-8F



ORDER NO.	D	d	H	SUIT FOR MODEL	WEIGHT	CODE NO.
FLT-0	138	100	20	RT-HV- 6, 8	1.9	1001-040
FLT-1	170	130	21	RT-HV- 8, 10	3.3	1001-041
FLT-2	195	155	24	RT-HV- 10, 12, 14	5.2	1001-042
FLT-3	210	160	24	RT-HV- 12, 14, 16	4.9	1001-043

Unit:mm

Precision 3-Jaw Scroll Chuck

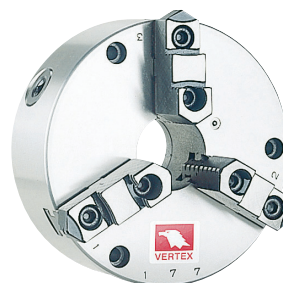
- Detail specification & Order NO. shown on page E5

Reversible type

For indexer, The fixing hole is from front.



ORDER NO.
VSC-5A SUIT FOR BS-0 OR HV-6, VUT-6, VU-150
VSC-6A SUIT FOR BS-1 OR HV-8, 10, VUT-6, VU-200
VSC-7A, 8A SUIT FOR BS-2 OR HV-10, 12, 14, VUT-10, 12
VSC-10A SUIT FOR HV-14, 16



ORDER NO.
VSK-6A SUIT FOR CS-6, CC-6
VSK-8A SUIT FOR CS-8, CC-8
VSK-12A SUIT FOR CC-12