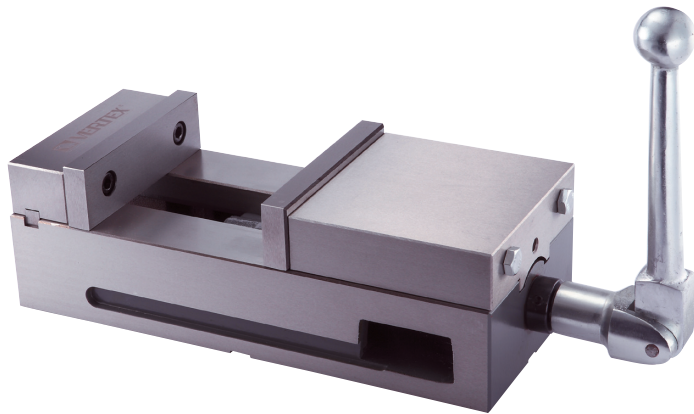




# Lock-Fixed II Precision Machine Vise



# VERTEX®

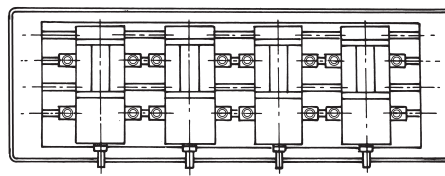
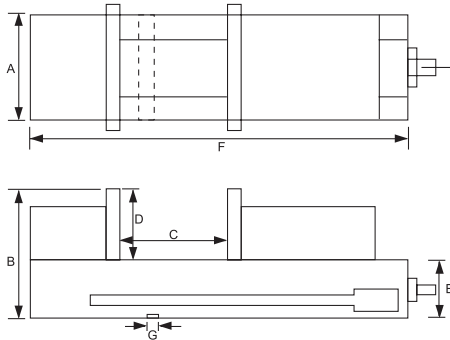


ORDER NO.  
VMC-4  
VMC-6



Performed sided vertically.

- With the ability of lock-fixed III 2, 3, 4, 5.
- Use the semi-sphere segment principle.
- When operate several vises (in a row) put on one machine bed, the operating situation is showed as below:



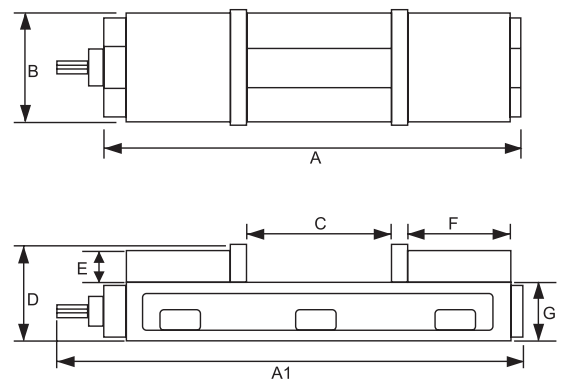
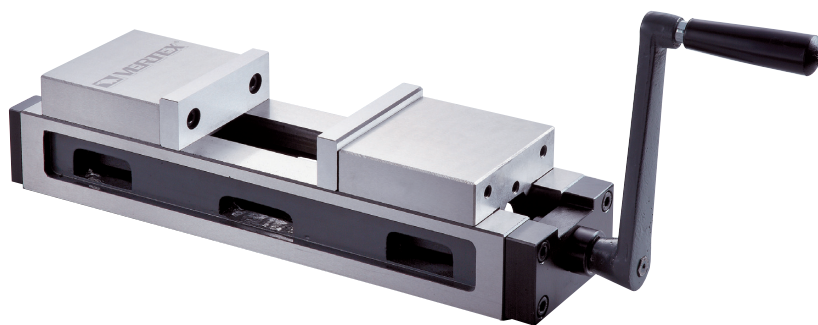
Performed jointly.

ORDER NO.	A	B	C OPEN	D	E	F	G	Max. Clamp Force	MEAS CUFT	WEIGHT (kg)	CODE NO.
VMC-4	108	100	100	37	63	285	16	1500kgs	0.4	14.2	1002-185
VMC-6	156	120	142	46	74	368	16	2500kgs	1.1	29.8	1002-186



# Compound Precision Vise

NEW



- Self centering. Suit for rough or irregular workpiece.
  - Compact design
  - High Accuracy
  - Super open capacity
  - Suitable for irregular workpiece.
- Rapid and convenient centralizing.

ORDER NO.	A	A1	B	C OPEN	D	E	F	G	Max. Clamp Force	kgs	CODE NO.
VCV-44	415	462	102	195	95	30	102	60		17.7	1002-240