

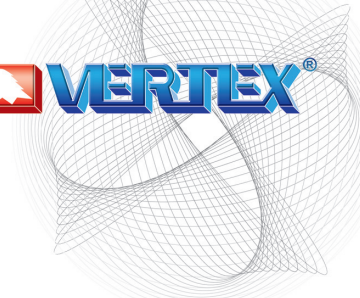


Precision Pneumatic Ang-Fixed Power Vise



VERTEX[®]

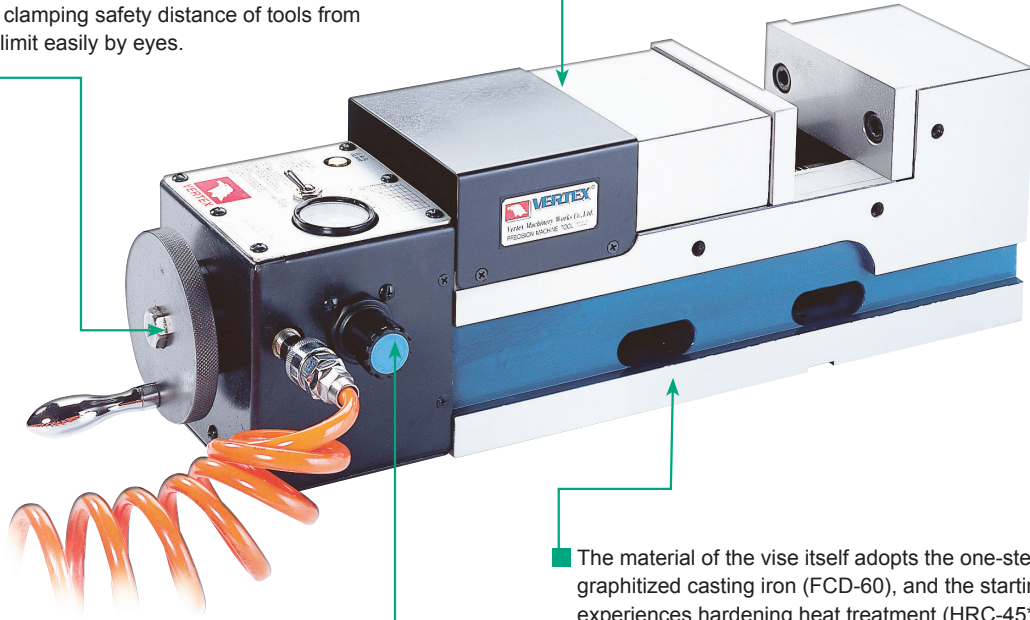
Suitable for mass production and to be used on machine centers, milling machines, drilling machines and special purpose machines.



The greatest safety distance of clamping:

The switch speed is only 1.5 seconds, and the safety distance of clamping can be up to 8mm. We design the hand wheel safety line in addition for anyone to distinguish the clamping safety distance of tools from exceeding the limit easily by eyes.

Down trust "semi-spherical segment" mechanism eliminates jaw lifting and work-piece lifting.

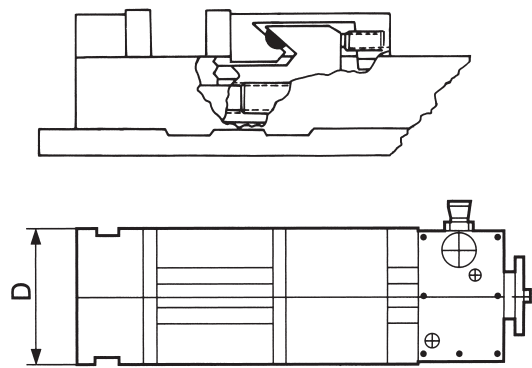
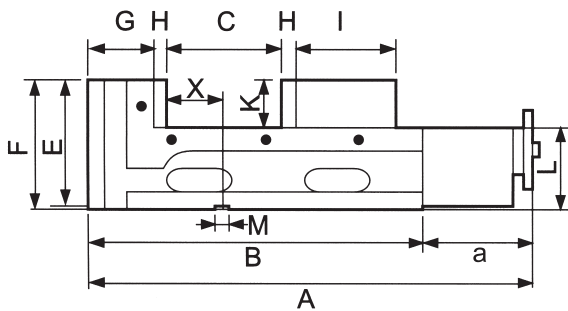


The material of the vise itself adopts the one-step design of highductility graphitized casting iron (FCD-60), and the starting rail of the two sides experiences hardening heat treatment (HRC-45*) that can assure good performance on precision, wear-resisting, and tension-resisting.

If the source of air pressure is under low pressure exertion of 8 kgf/cm², it can achieve the super strong clamping capacity of 9000 kg/cm². The clamping capacity from 0~9000 kg/cm² can be freely set and adjust via pressure regulator.

Automatically seeking the highest source of air pressure:

When the pressure regulator sets the regulator sets the required pressure, it will not be out of order because the source of air pressure is low.



Unit:mm

ORDER NO.	A	B	a	D	E	F	G	H	I	C OPEN	K	L	M	X	Clamp Force (KN)	N.W. (kg)	G.W. (kg)	CODE NO.
VMC-5P	520	380	140	130	157	160	86	15	110	0-150	55	105	18	45	6000	38	41	4005-070
VMC-6P	540	400	140	160	160	163	86	15	120	0-160	58	105	18	45	6000	48	50	4005-071
VMC-6PL	630	490	140	160	160	163	86	15	120	0-250	58	105	18	45	6000	51	56.5	4005-072
VMC-7P	600	460	140	180	170	173	90	18	130	0-200	63	110	18	72	9000	65	66.5	4005-073
VMC-8P	610	470	140	200	170	173	90	18	140	0-200	63	110	18	72	9000	70	76.5	4005-074
VMC-8PL	710	570	140	200	170	173	90	18	140	0-300	63	110	18	72	9000	79	86	4005-075