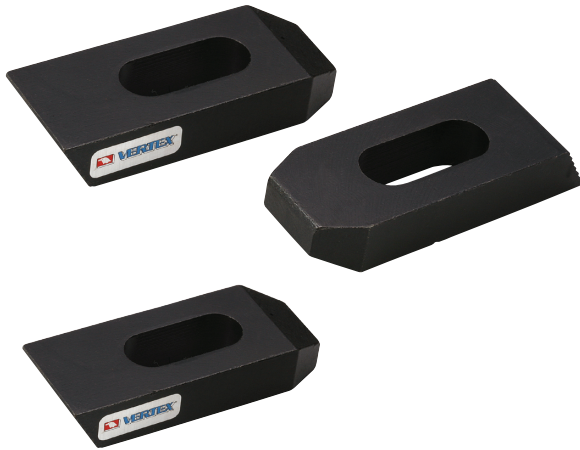




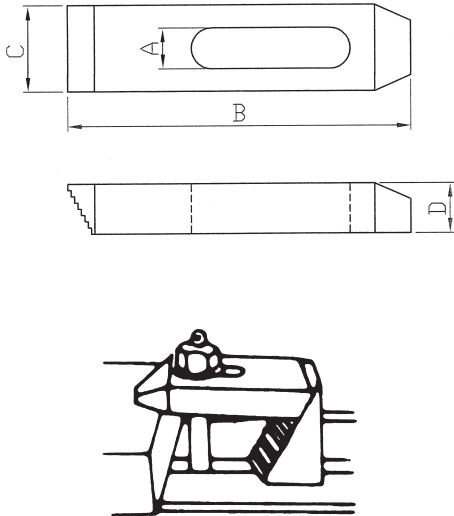
Step Clamp

HRC 37°



Metric Size

ORDER NO.	Bolt Size	A slot	B Length	C Width	D Thickness	Weight (kg)	CODE NO.
6113M	M8 or M10	11	64	25	12	0.25	1003-030M
6123M	M8 or M10		100	25	16	0.49	1003-031M
6133M	M8 or M10		150	28	19	0.99	1003-032M
6214M	M12	14	64	28	12	0.25	1003-033M
6224M	M12		100	32	19	0.35	1003-034M
6234M	M12		150	32	22	0.60	1003-035M
6215M	M16	18	64	32	22	0.31	1003-036M
6225M	M16		100	38	19	0.85	1003-037M
6235M	M16		150	38	22	1.47	1003-038M
6316M	M20 or M18	20	100	38	19	0.75	1003-039M
6326M	M20 or M18		150	38	25	1.43	1003-040M
6336M	M20 or M18		200	44	28	2.82	1003-041M
6417M	M24	26	150	50	32	1.9	1003-042M
6427M	M24		200	50	35	2.75	1003-043M
6437M	M24		250	50	38	3.8	1003-044M



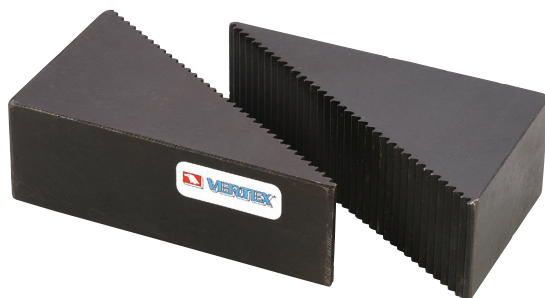
Inch Size

ORDER NO.	Bolt Size	A slot	B Length	C Width	D Thickness	Weight (kg)	CODE NO.
6113	5/16 or 3/8	11	64	25	12	0.25	1003-030
6123	5/16 or 3/8		100	25	16	0.49	1003-031
6133	5/16 or 3/8		150	28	19	0.99	1003-032
6214	1/2	14	64	28	12	0.25	1003-033
6224	1/2		100	32	19	0.35	1003-034
6234	1/2		150	32	22	0.60	1003-035
6215	5/8	18	64	32	22	0.31	1003-036
6225	5/8		100	38	19	0.85	1003-037
6235	5/8		150	38	22	1.47	1003-038
6316	3/4	20	100	38	19	0.75	1003-039
6326	3/4		150	38	25	1.43	1003-040
6336	3/4		200	44	28	2.82	1003-041
6417	7/8 or 1	26	150	50	32	1.9	1003-042
6427	7/8 or 1		200	50	35	2.75	1003-043
6437	7/8 or 1		250	50	38	3.8	1003-044



Step Block

HRC 37°



mm

STANDARD STEEL BLOCK (25 WIDE A)(31 WIDE B)				
ORDER NO.	CAPACITY OF FULL BLOCK	HEIGHT OF BLOCK	WEIGHT (kg)	CODE NO.
5114	32 to 46	30	0.14	1003-170
5124	50 to 75	48	0.28	1003-171
5134	100 to 150	97	1.245	1003-172
HEAVY DUTY STEEL BLOCK 33mm WIDE				
5215	63 to 94	63	0.53	1003-173
5225	75 to 200	75	1.72	1003-174
5235	138 to 230	138	3.25	1003-175