



# Magnifying Fluorescent Work Light Beams



**VERTEX**<sup>®</sup>



VHL-30TEB  
BENCH TYPE

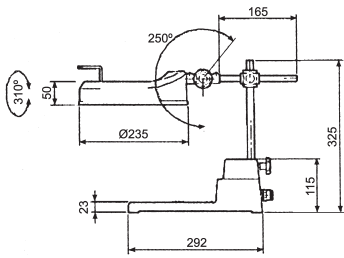


VHL-30MEB

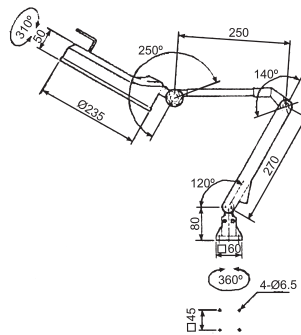


3X auxiliary lens (optional)

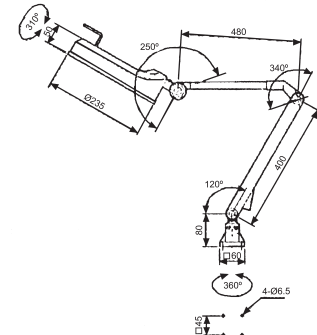
VHL-30LEB



VHL-30TEB BENCH TYPE



VHL-30MEB MEDIUM ARM



VHL-30LEB LONG ARM

## VHL-30TEB

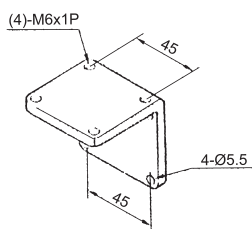
- Bench type model.
- Constructed with a wide base for placing object, allowing it especially suited for inspection lighting.
- Electronic ballast is built in arm.
- Accepts 22 watt fluorescent tube.
- 110V, or 220V operation. Supplied single voltage only. Specify desired voltage when ordering.
- Furnished with 1.8 meter cord with plug. Extended cord length is available when required.

Designed with a magnifier lens on luminaire head giving 3 times of magnification 3x than actual object. The fluorescent lighting provides day light effect without flash.

## ●OPTIONAL●

ORDER NO. VHL-3X  
3X magnifier lens

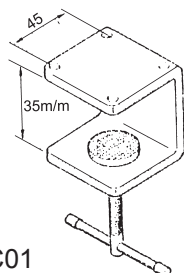
## ●OPTION



J-L01

MOUNTING ANGLE  
PLATE

## ●STANDARD ACC.



J-C01

MOUNTING CLAMP

## VHL-30 MEB

- Medium arm model.
- Electronic ballast is built in arm.
- Accepts 22 watt fluorescent tube.
- 110V, or 220V operation. Supplied single voltage only. Specify desired voltage when ordering.
- Furnished with 1.8 meter cord with plug. Extended cord length is available when required.

## VHL-30 LEB

- Long arm model.
- Electronic ballast is built in arm.
- Accepts 22 watt fluorescent tube.
- 110V, or 220V operation. Supplied single voltage only. Specify desired voltage when ordering.
- Furnished with 1.8 meter cord with plug. Extended cord length is available when required.

ORDER NO.	WEIGHT (kg)	CODE NO.
VHL-30TEB	3.5	1025-060
VHL-30MEB	2.9	1025-062
VHL-30LEB	2.9	1025-063
J-L01	0.6	1025-014
VHL-3X	0.3	1025-065

- All work lights are with 3X magnifier lens, If you need 6 times, you have to choose VHL-3X extraly.