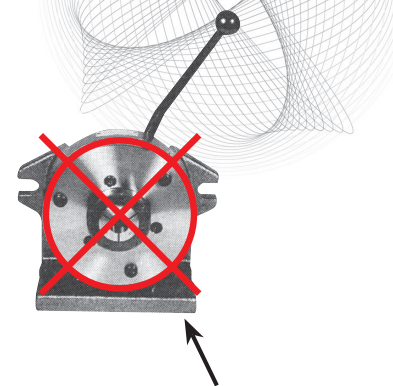
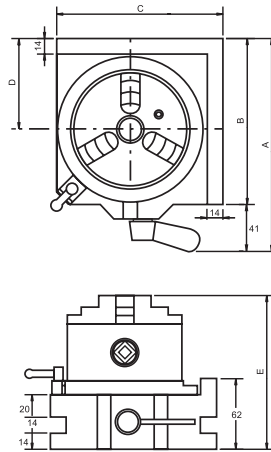
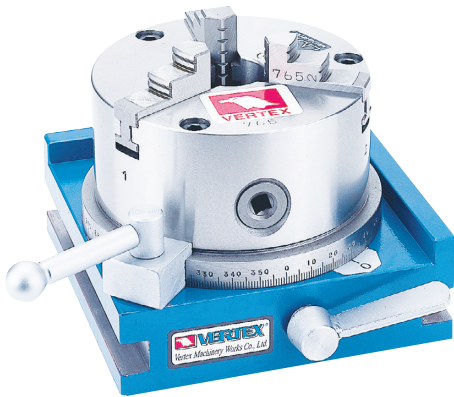


Economical Type Rapid Index



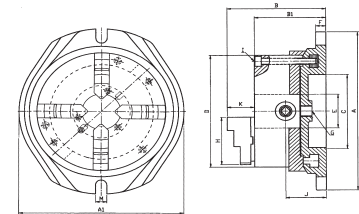
5C COLLET INDEXER
NON ECONOMICAL

- 3 JAW CHUCK VSC-4A, for VSI-4 / VSC-5A for VSI-5, the big range clamping capacity $\varnothing 3 - \varnothing 100$, it's better than collet fixing type.
- Simple & rapid operation.
- Dividual number 24-notch (15° each)
- Table scale 1° , for angular indexing.
- Table bore 30mm.
- Horizontal / vertical & 2 direction
- Suit for milling & drilling machine using.
- Optional: tailstock TS-1, Please see page A2

ORDER NO.	A	B	C	D	E	kgs	CODE NO.
VSI-4	187	146	146	80	135	10.5	1001-064
VSI-5	202	161	161	87	142	14.5	1001-065

Simple Rotary Chuck

NEW



VSR-6 WITH VPS-6A CHUCK
VSR-8 WITH VPS-8A CHUCK

- 4-jaw chuck (include reversable and removable jaw) is designed with swivel base for multifunctional purpose.
- VERTEX simple rotary chuck can be placed and fixed on your desired position.
- 360° vernier scale: smooth swival motion and easy locking by screws.
- Both horizontal and vertical position could be used on milling and machining center.

ORDER NO.	A	A1	B	B1	C	D	F	G	H	I	J	K	M	kgs	CODE NO.
VSR-6	244.6	233.2	139.3	110.4	100	160	14.9	25	70.6	3-M8	69	28.9	14	18	1001-066
VSR-8	340	269.4	159	124.6	115	200	18.4	25	86	3-M10	75.7	34.4	18.4	30.5	1001-067

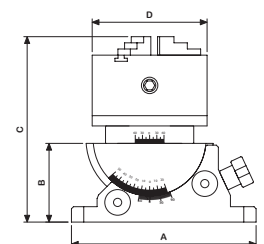
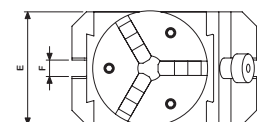
Precision Universal Angle Chuck

NEW



- Precision graduation for accurate reading.
- Its swivelling and tilting features make this unit well suited for straight or inclined surface, angular drilling machining on various machine tools.
- With VSC-4 3-Jaw chuck.
- O.D. clamping $\varnothing 3-90$ mm,
- I.D. clamping $\varnothing 32-84$ mm.
- Tolerance $\pm 0.01\text{mm}/100\text{mm}$.
- 2 axis with angle scale
- For angle setting
- Chuck indexing / Rotating setting
- Tilting Features same as VUA series, Page B5.

With VSC-4 Chuck



ORDER NO.	A	B	C	D	E	F	G.W (kgs)	CODE NO.
VUA-100J	180	77	181	112	110	16	14	2003-060